

Silhouette Body Contouring serum

The professional solution for perfect body shapes and healthy skin





**A direct acting
lipolytic specifically
formulated for body
fat correction**



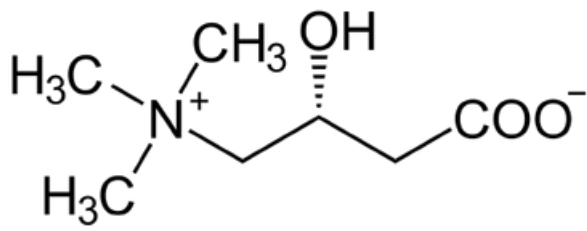
Contents

- 4** What is Meamo Labs Silhouette Body Contouring Serum?
- 6** Who can use Silhouette Body?
- 9** Composition and functional activity of Silhouette Body Contouring Serum
- 11** Why is Silhouette Body better than other lipolytics? Unique advantages.
How does Silhouette Body work?
- 13** Mechanism of action
Where and how to use Silhouette Body?
- 16** Results from scientific studies and clinical trials
- 24**

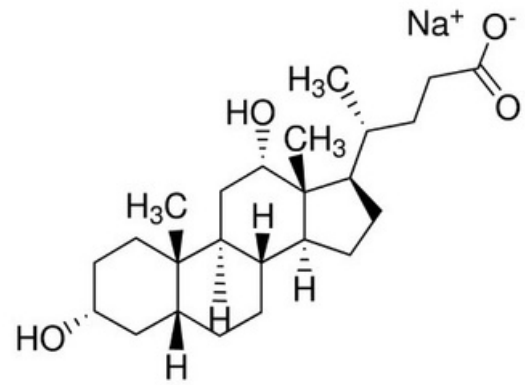
What is Meamo Labs Silhouette Body Contouring Serum?



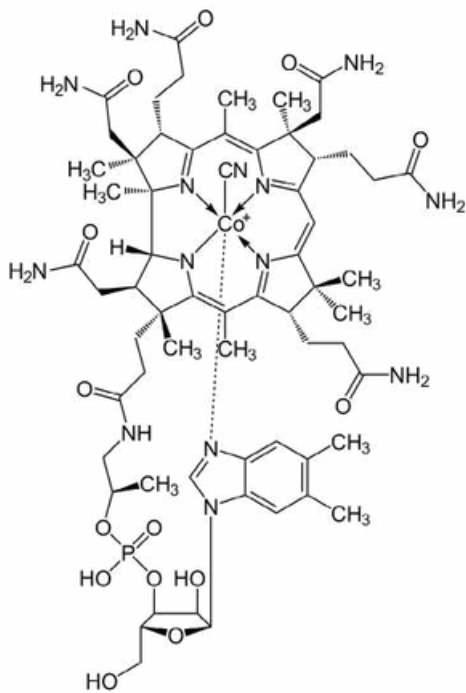
A safe and effective product for intradermal lipolysis in combination with injectable mesotherapy.



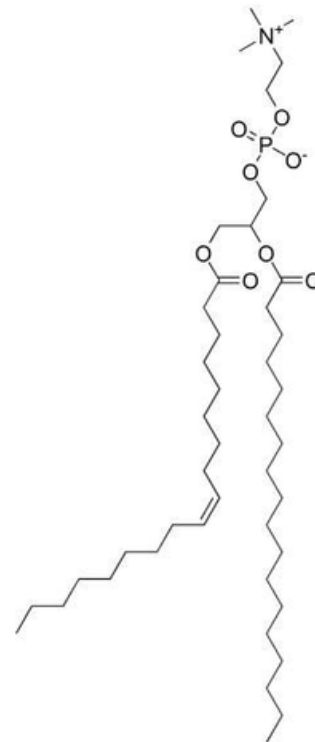
● L-CARNITINE



● SODIUM DEOXYCHOLATE



● VITAMIN B12



● PHOSPHATIDYLCHOLINE

Silhouette Body is a product based on highly purified phosphatidylcholine, which induces apoptosis of adipocytes.

In order to accelerate the lipolysis and the catabolism of fatty acids, we have also included sodium deoxycholate, L-carnitine and vitamin B12 in our product.

Additional features of the Silhouette Body active formula



1.

The product is chemically stable and has no harmful toxicity to human tissues.

2.

None of the components of Silhouette Body are known to be carcinogenic according to IARC.

3.

Neutral acidity of the product. With a pH of 6.8, Silhouette Body does not disturb the internal acid-base homeostasis of the dermis.

4.

Silhouette Body is a colorless liquid, which means that its subcutaneous injections will not leave areas of altered pigmentation.

Who can use Silhouette Body?

With Silhouette Body, your patients will lose weight without grueling diets and endless hours in the gym. It is the most effective and fastest way to shed those extra pounds without surgery. Silhouette Body is designed to correct the contours of the arms, thighs, buttocks, lower abdomen and waist.

Indications for use:



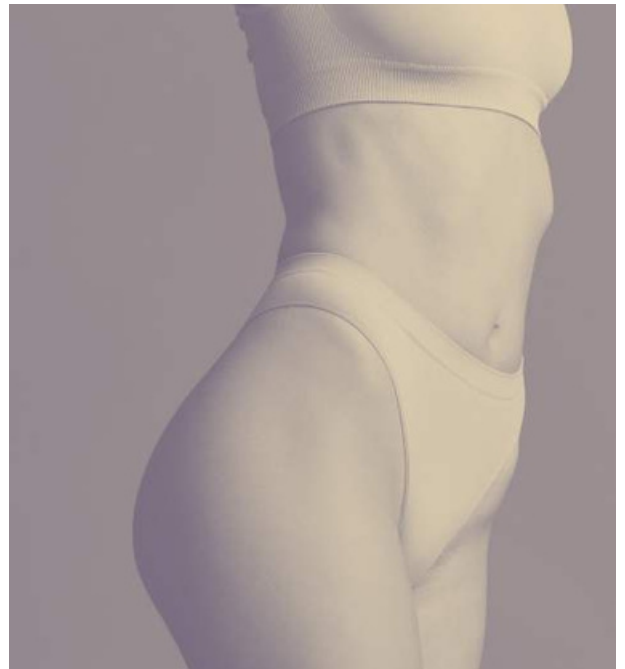
Axillary, upper arm and lateral shoulder blade fat deposits.



Excessive fat deposits in the abdomen, buttocks, thighs or waist.



Ptosis of the skin and decreased tissue turgor leading to wrinkles.



General contour correction.

Composition and functional activity of Silhouette Body Contouring Serum



Ingredient	% in the product
SOLUTION BASE	
Purified water	91.35%
MAJOR LIPOLYTIC AGENTS	
Phosphatidylcholine	1.50%
Sodium Deoxycholate	0.50%
ADIPOCYTE APOPTOSIS AND LIPID CATABOLISM STIMULATORS	
L-Carnitine	0.50%
Riboflavin	0.25%
Cyancobalamin	0.20%
DERMAL ANTIOXIDANTS	
Superoxide Dismutase	0.30%
Ascorbic Acid	0.30%
Niacin	0.25%
Nicotinoyl Tripeptide-1	0.25%
Thioredoxin	0.30%
STIMULATORS OF COLLAGEN AND ELASTIN SKIN FRAMEWORK FORMATION	
Epidermal Growth Factor	0.35%
Fibroblast Growth Factor	0.35%
Insulin-like Growth Factor	0.35%
DERMAL PTOSIS AND WRINKLE CORRECTORS	
Acetyl Hexapeptide-8	1.00%
Palmitoyl Pentapeptide-4	0.35%
Palmitoyl Tetrapeptide-7	0.35%
Dipeptide Diaminobutyroyl Benzylamide	0.10%
ANTI-INFLAMMATORY, HYDRATING AND ANTIBACTERIAL COMPONENTS	
Hexane-1,2-diol	1.00%
Adenosine	0.20%
Arginine	0.10%
Arbutin	0.10%

Why is Silhouette Body better than other lipolytics?



Unique advantages

Meamo Labs Silhouette Body has several innovative features:

1.

Our product not only reduces subcutaneous fat, but also tightens the skin, eliminating ptosis caused by loss of tissue volume.

2

Silhouette Body increases the rate of lipolysis by activating lipid metabolism with L-carnitine, riboflavin and cyanocobalamin.

•

Our product contains cell growth factors, collagen synthesis stimulators and skin antioxidants that help restore skin elasticity.

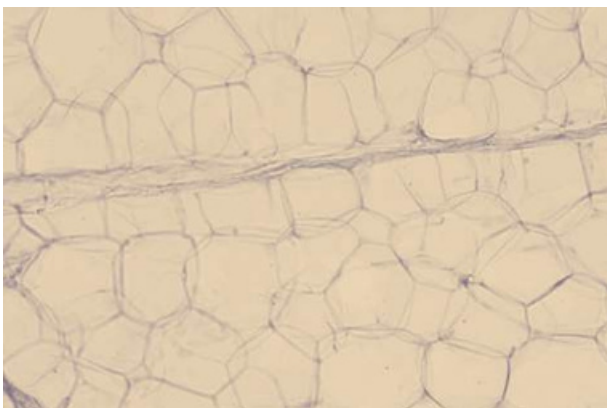
3

The phosphatidylcholine and sodium deoxycholate in Silhouette Body are 99% pure thanks to nanotechnology absorption methods.

•

How does Silhouette Body work?

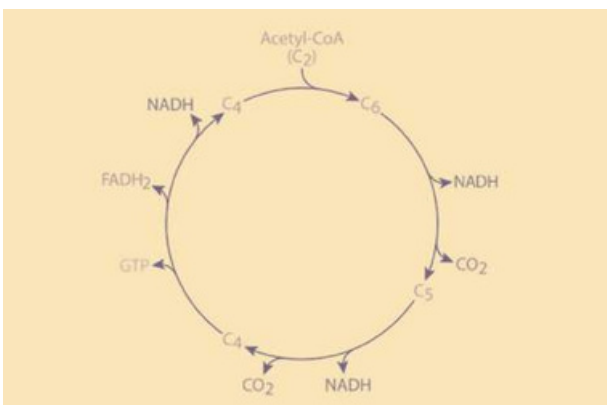
Mechanism of action



Silhouette Body induces direct apoptosis of adipocytes, which are poorly involved in the general metabolism and make up the bulk of fat deposits.



Then, the excipients of our product emulsify the lipids released by the adipocytes, accelerating their elimination from the body.

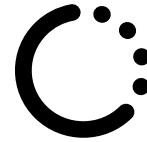


In addition, riboflavin and cyanocobalamin stimulate local lipid catabolism as they are essential coenzymes for the citric acid cycle.

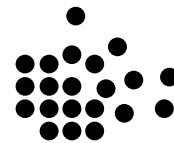
Mechanism of Adipocyte Apoptosis

Biochemical studies describing the mechanism of action of sodium deoxycholate and phosphatidylcholine show that sodium deoxycholate acts like a detergent and rapidly induces cell apoptosis. And phosphatidylcholine leads to the release of TNF- α and stimulates enzymatic lipolysis over the next 24 hours. Many researchers have noted the high synergy of these two compounds.

Frątczak A, Polak K, Szczepanek M, Waliczek M, Bergler-Czop B. Injection lipolysis with phosphatidylcholine and sodium deoxycholate. *Dermatol Ther.* 2022;35(12):e15805. doi:10.1111/dth.15805



Sodium deoxycholate disrupts the lipid membrane bilayer of adipocytes



Phosphatidylcholine enters the adipocyte and dissolves the stored lipid deposits

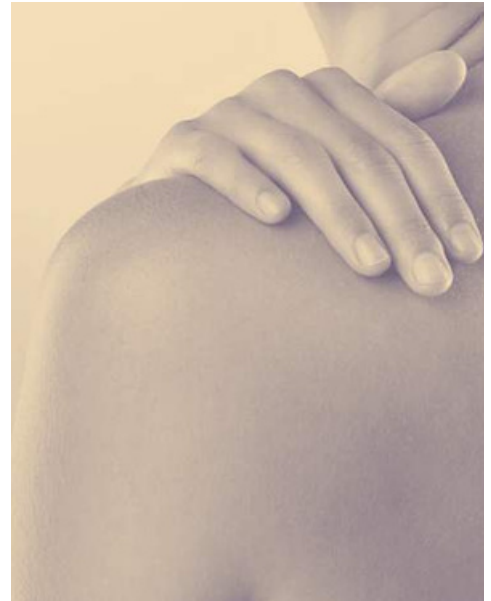
Wrinkle Smoothing Mechanism

Dipeptide diaminobutyroyl benzylamide, acetyl hexapeptide-8 and palmitoyl peptides are protein components, so-called ultrashort peptides, consisting of no more than 6 amino acid residues. Due to their low molecular weight, they easily penetrate the dermis and the underlying muscle layer. There they have a local myorelaxing effect, which is why they are called "Botox-like peptides". They help eliminate wrinkles and tighten the skin, eliminating the ptosis that can occur due to loss of tissue volume as a result of lipolysis.



According to clinical studies, after 4 weeks of using botox-like peptides, participants' skin became an average of 21% smoother, the number of fine lines and wrinkles decreased by 15-20%, and 80% of volunteers noted an overall improvement in skin micro-relief.

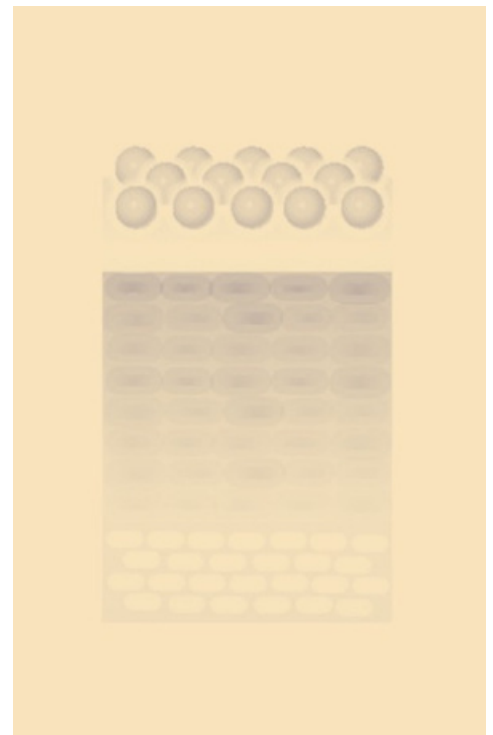
Wongrattanakamon P, Nimmanpipug P, Sirithunyalug B, Jiranusornkul S. Molecular modeling elucidates the cellular mechanism of synaptotagmin-SNARE inhibition: a novel plausible route to anti-wrinkle activity of botox-like cosmetic active molecules. *Mol Cell Biochem.* 2018;442(1-2):97-109. doi:10.1007/s11010-017-3196-5



Mechanism of stimulation of collagen and elastin synthesis

EGF (epidermal growth factor), FGF (fibroblast growth factor) and IGF (insulin-like growth factor) accelerate the production of collagen and elastin in skin cells. This is accomplished primarily by stimulating the appearance of new fibroblasts, which synthesize the skin's matrix proteins. In addition, these growth factors stimulate lipolysis and block the accumulation of intracellular lipids in adipocytes.

Hauer H, Röhrig K, Petruschke T. Effects of epidermal growth factor (EGF), platelet-derived growth factor (PDGF) and fibroblast growth factor (FGF) on human adipocyte development and function. *Eur J Clin Invest.* 1995;25(2):90-96. doi:10.1111/j.1365-2362.1995.tb01532.x



Where and how to use Silhouette Body?



Dosage, body areas, injection technique

● Silhouette Body is designed to correct the contours of the arms, thighs, buttocks, lower abdomen and waist.

● Silhouette Body works locally. This means that it should be injected directly into the areas where it is necessary to eliminate excessive fat deposits.

● For Silhouette Body injections, ultra fine needles should be used. This virtually eliminates unpleasant sensations. The optimal needle is a 30G with a length of 10 mm.

● Silhouette Body acts on the adipocytes located in the subcutaneous fat layer. Therefore, the depth of the injections depends on the area where we need to remove excess fat.

● It is important not to insert the needle deeper - into the subcutaneous framework, which consists of muscle tissue. One method of determining whether the needle has reached the subcutaneous fat depot is the sensation of its movements.

● The connective tissue of the epidermis and dermis is quite tough, it resists the movement of the needle well. But when the needle penetrates the fat layer, this resistance disappears.

● The injection points of Silhouette Body should be placed in the knots of an imaginary grid consisting of square cells with a side of 1 cm.

Recommended volume of Silhouette Body injections

Shoulder and upper arm:

0,01 ~ 0,1 ml



Abdominal area:

0,05 мл ~ 0,2 ml



Excess fat on waist:

0,05 мл ~ 0,2 ml



Excess fat folds on the back or "bra rolls":

0,05 ~ 0,1 ml



Thighs and buttocks:

0,1 мл ~ 0,2 ml



Course of Silhouette Body injections

mon	tue	wed	thu	fri	sat	sun
●						
		●				
				●		

1.

The best results with Silhouette Body are obtained with a course application.

2.

The actual number of treatments depends on the area to be corrected and the volume of fat deposits.

3.

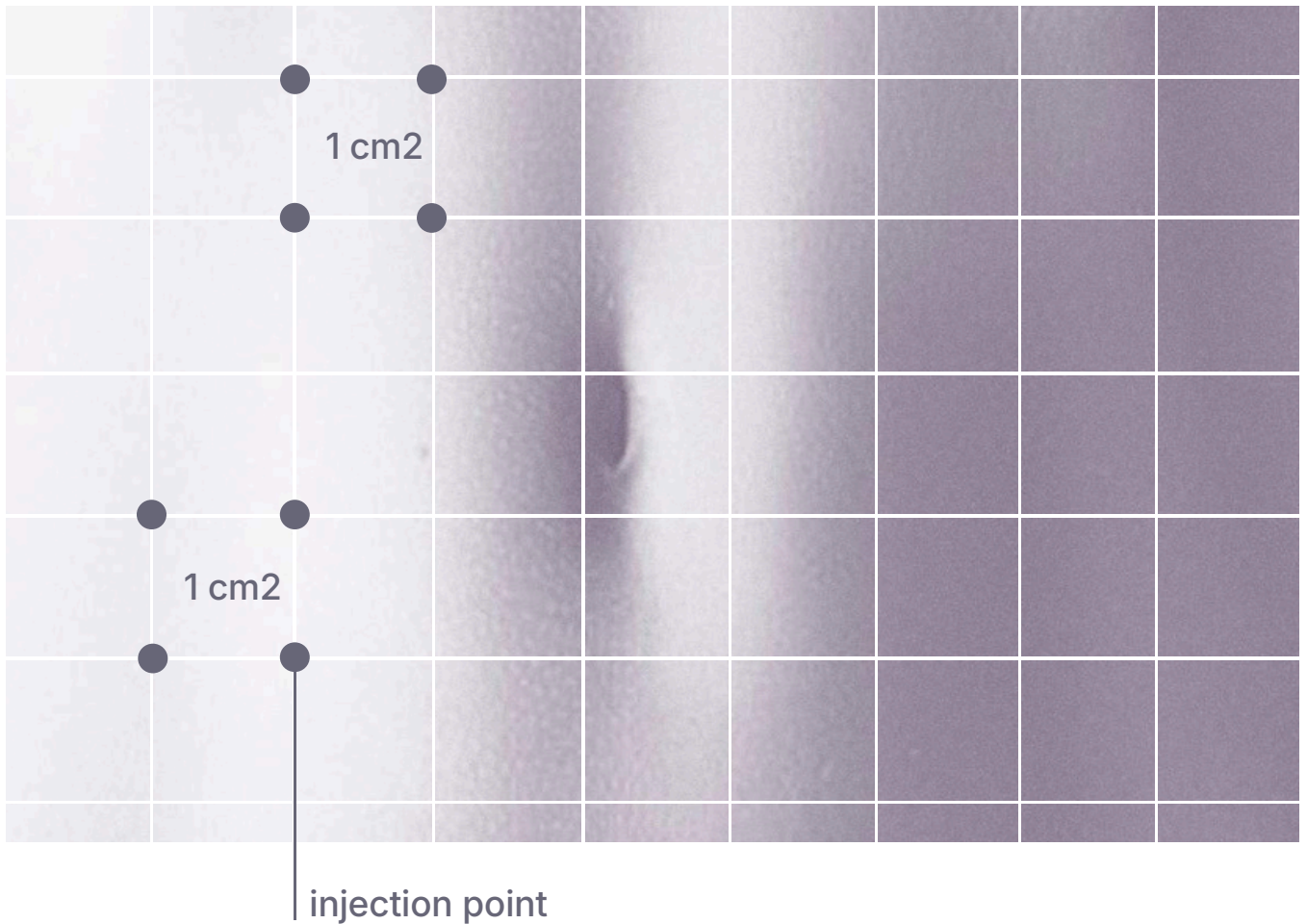
On average, 3 to 8 injection sessions are required to achieve the desired results.

4.

The interval between treatments should be 15 days

Silhouette Body Protocol Summary Table

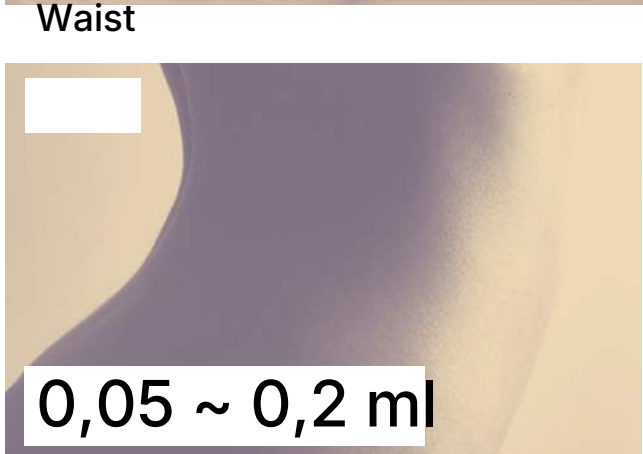
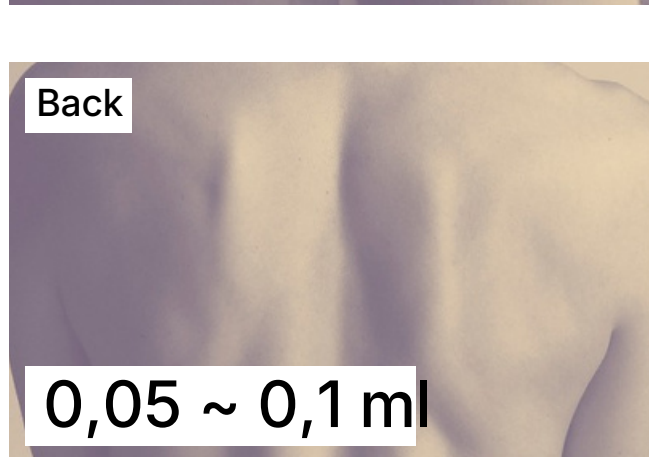
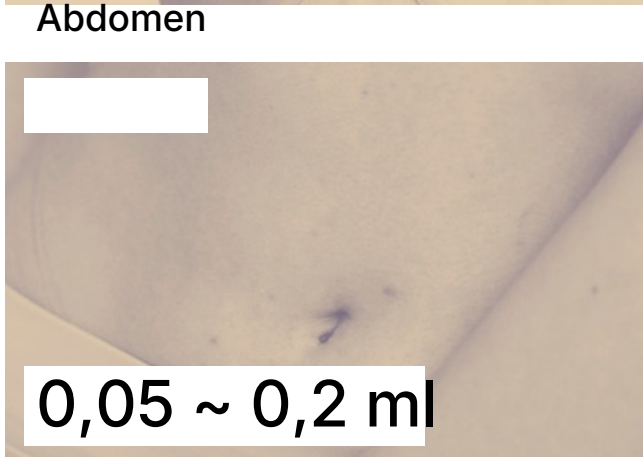
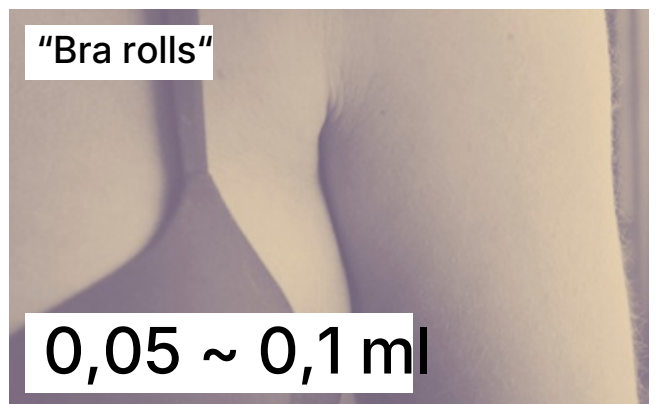
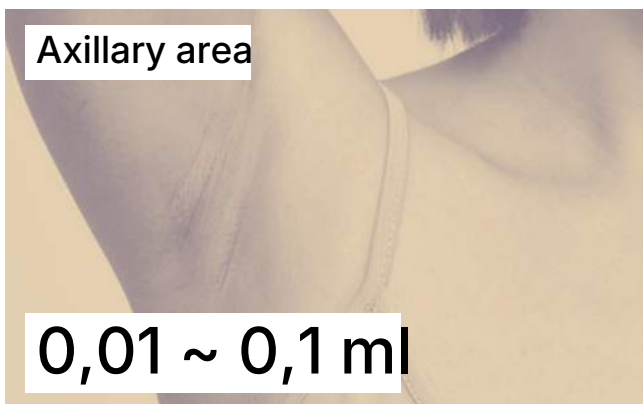
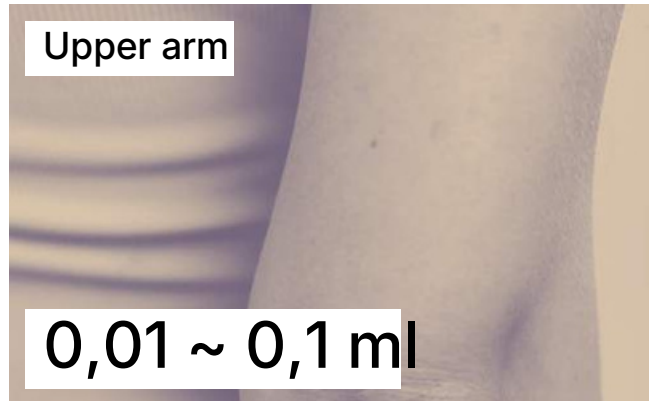
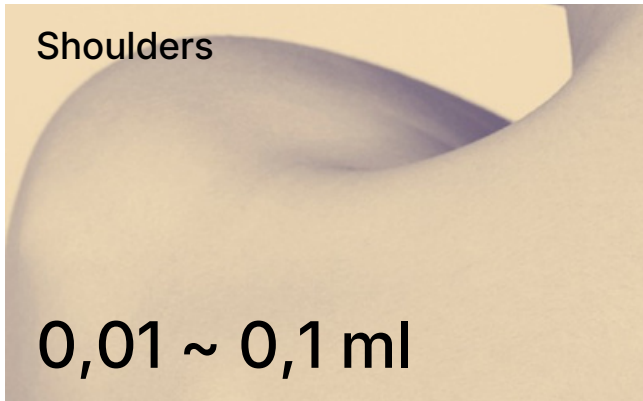
Injection points



Depth of injection
From 6 to 13 mm
depending on sex,
age and body area

Number of sessions
From 3 to 8 sessions
at 15-day intervals

Volume of one injection



What to do after the injection?

Recommend:



Rest for 30-40 minutes after the injections sitting quietly in a chair



Immediately drink 0.5 liters of water to speed up the breakdown of lipids. For 2 weeks, drink 2 - 2.5 liters of pure water daily to accelerate the elimination of adipocytes apoptosis products.

Not recommend:



Do not touch the treated area or apply cosmetic products on it for one day.



Avoid heavy physical exertion, visiting a swimming pool, sauna and solarium for one week.

How quickly will the result appear?

Initial and cumulative effects

The first reduction in body volume can be noticed 3-4 days after the session of Silhouette Body injections. The results are usually become more visible in the second week after the session. The final result will be visible after the end of the course and the disappearance of the effects of the injections.

Our product also has a cumulative effect. The result of its use becomes more and more pronounced with time and with each new session of injections. This is due to the gradual tightening of the skin and the formation of its new collagen framework.

Results from scientific studies and clinical trials

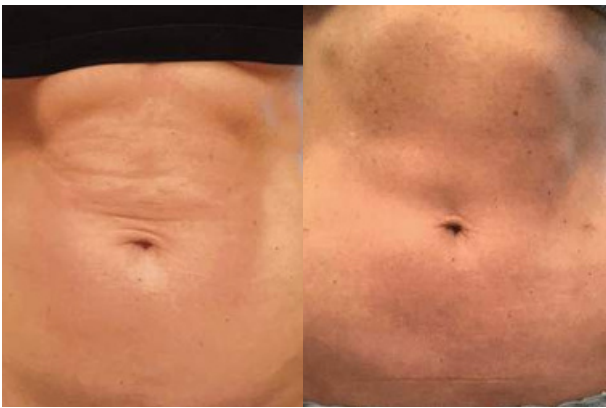
Changes in various parameters (in %) based on the results of the Silhouette Body performance analysis 4 weeks after a single injection session.



Subcutaneous fat layer reduced by 17.7%



Skin texture improved by 16.4%



Skin elasticity increased by 1.4%



Skin hydration increased 18.8%



Wrinkles decreased by 3.9%



Skin tone improved by 2.8%

How to store Silhouette Body

Precautions for safe storage and use of Silhouette Body

Store vials away from heat sources and open flames, in a cool, well-ventilated place.



Do not expose the vial to direct sunlight.



Storage temperature should not exceed 30°C.



Once opened, the vial should be stored in the refrigerator at a temperature of 5-10°C for no more than 7 days.



Make sure the vial is always tightly closed.



Use the product in a room with good ventilation.

