



KABELLINE
CONTOURING SERUM



2022



WHAT IS KABELLINE?



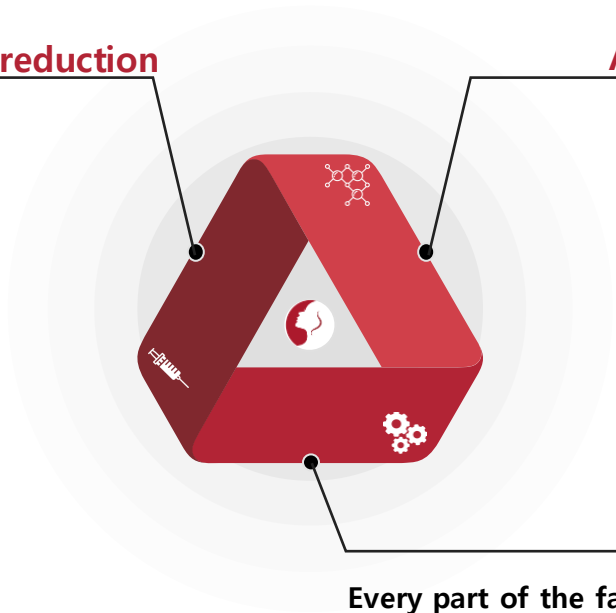
8ml X 5vials/ box

01 **Injectable** for localized fat reduction

Effectively breaks down adipocyte cells

Active ingredient 02

Deoxycholic Acid,
Peptide complex,
L-Carnitine

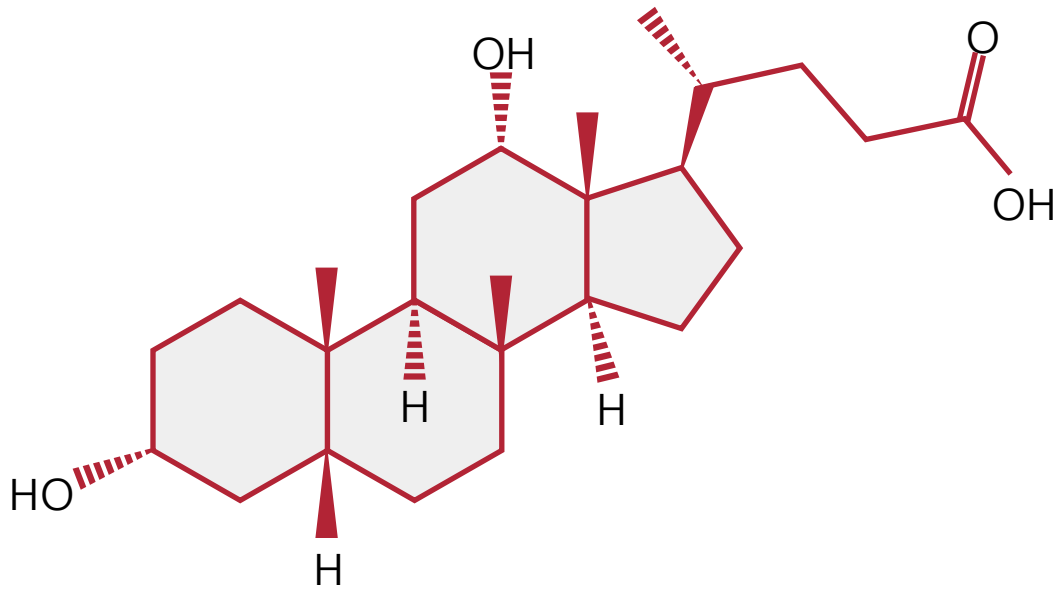


Usage 03

Every part of the face and body.
Specially where difficult to get removed by
exercise and diet



DEOXYCHOLIC ACID



GENERAL INFO

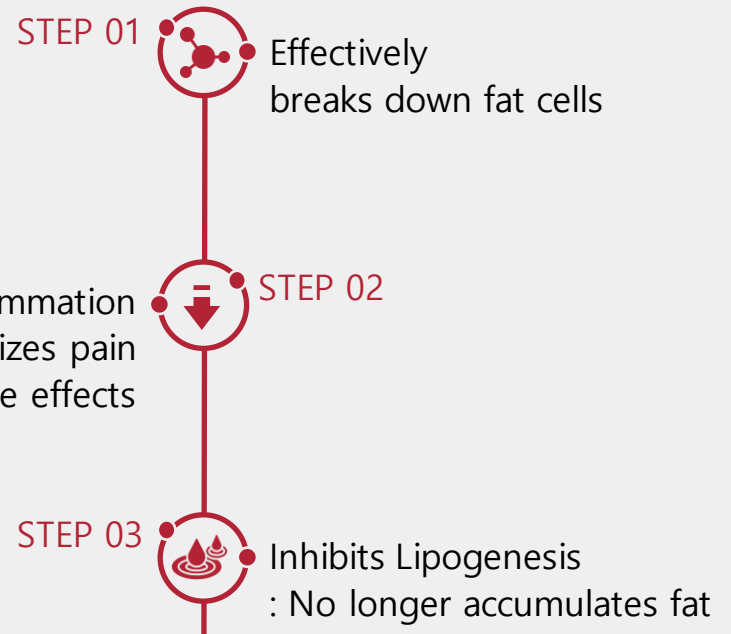
Deoxycholic acid is a fat dissolving material. In the human body, deoxycholic acid is used in the emulsification of fats for the absorption in the intestine.

We modeled this ingredient on KABELLINE which contains synthetic Deoxycholic acid

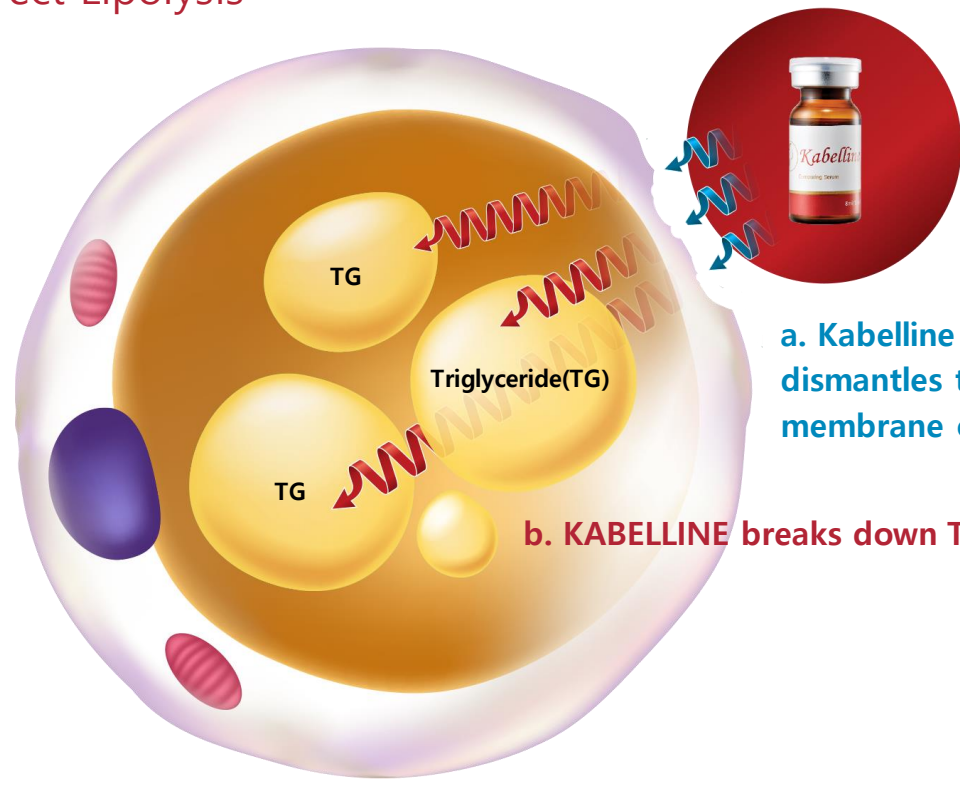


HOW KABELLINE WORKS

3 STEP of Total Fat Care solution



Step 01 Direct Lipolysis



a. Kabelline effectively dismantles the membrane of fat cells.

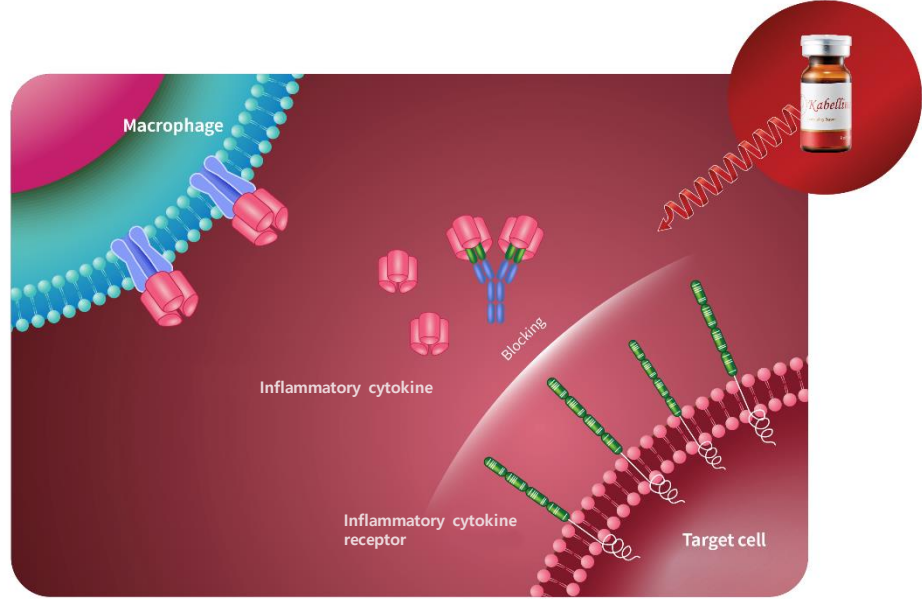
b. KABELLINE breaks down TGs.

FAT CELL

KABELLINE directly breaks down TGs of the adipocyte cell.

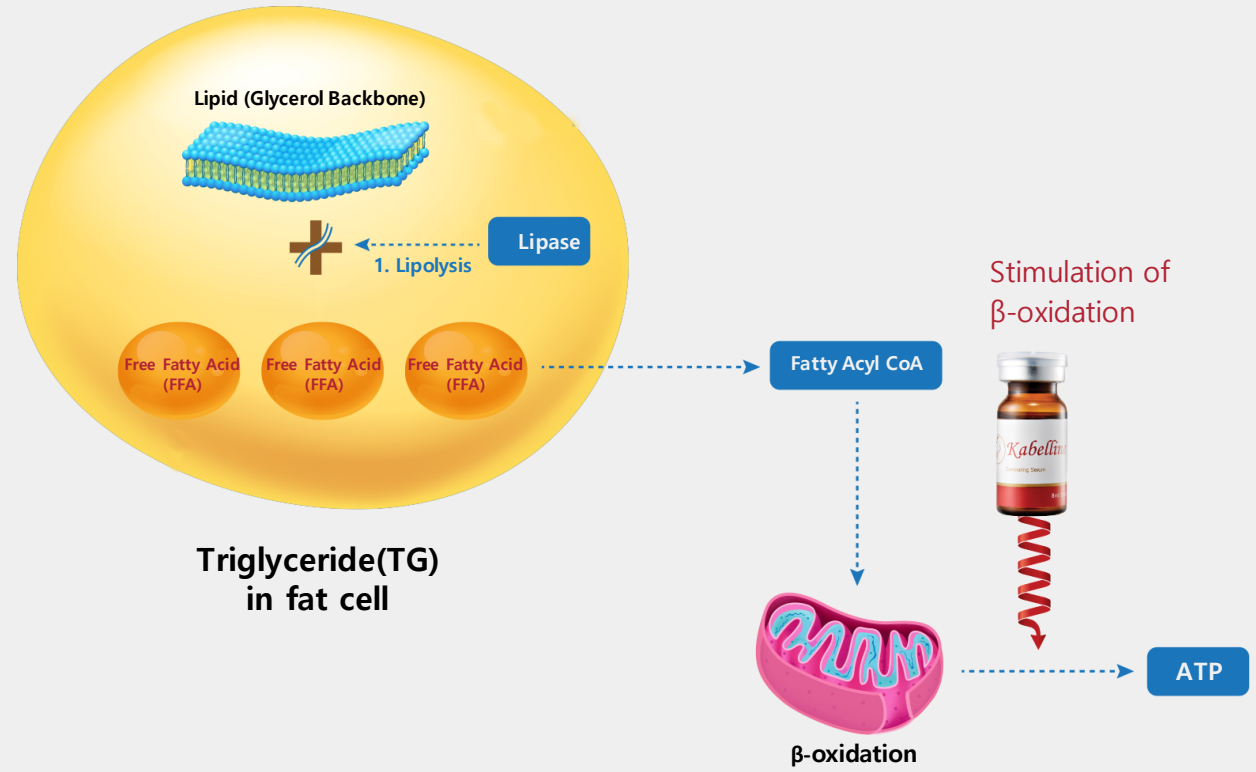


Step 02 Anti-inflammation



KABELLINE inhibits Inflammatory cytokine from binding with Inflammatory cytokine receptor and reduces side effects.

Step 03 Inhibition of Lipogenesis







Just breaking down fat cells are not enough.

Problem is, FFA becomes TG again unless they are metabolized properly. Kabelline helps FFA be used as an energy source. As a result, it prevents regeneration of fat cells.



Comparison of other products and Kabelline

	 Product based on Plant extract	 Other Lipolysis Product	  KABELLINE
Main Ingredient	Soy Isoflavone Ferment, Juglans Regia Seed, Tyrosine, Peptide, etc	Phosphatidilcolin, Deoxycholic Acid	Deoxycholic Acid, L-Carnitine, peptide complex
Durability	Officially 3~4 months	Technically eternal/ Officially 5 years	Technically eternal/ Officially 5 years
Advantages	Reduces Fat size	Breaks down Fat cell	Breaks down Fat cell, Inhibits Lipogenesis
Side Effect	Yoyo effect Shrunk fat cell turns back to be normal	Swelling, Bruising	No swelling, no bruising
Down Time	1~3 days	20~30 days	1~3 days
Pain	Painless	Severe Pain	Painless



TREATMENT

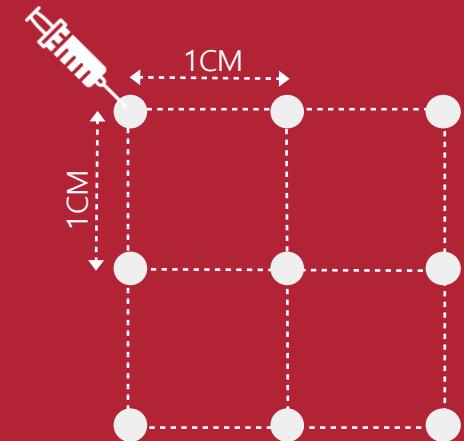


Injection volume	Face: 2~4 ml / Body: 4~8ml
Injection depth	Subcutaneous layer
Needle	30G
Maximum dosage	Up to 24 ml (3 ampoules) per session
Number of treatments	3~6 sessions in total at 1-week interval
Precautions	Massage after the application is recommended.



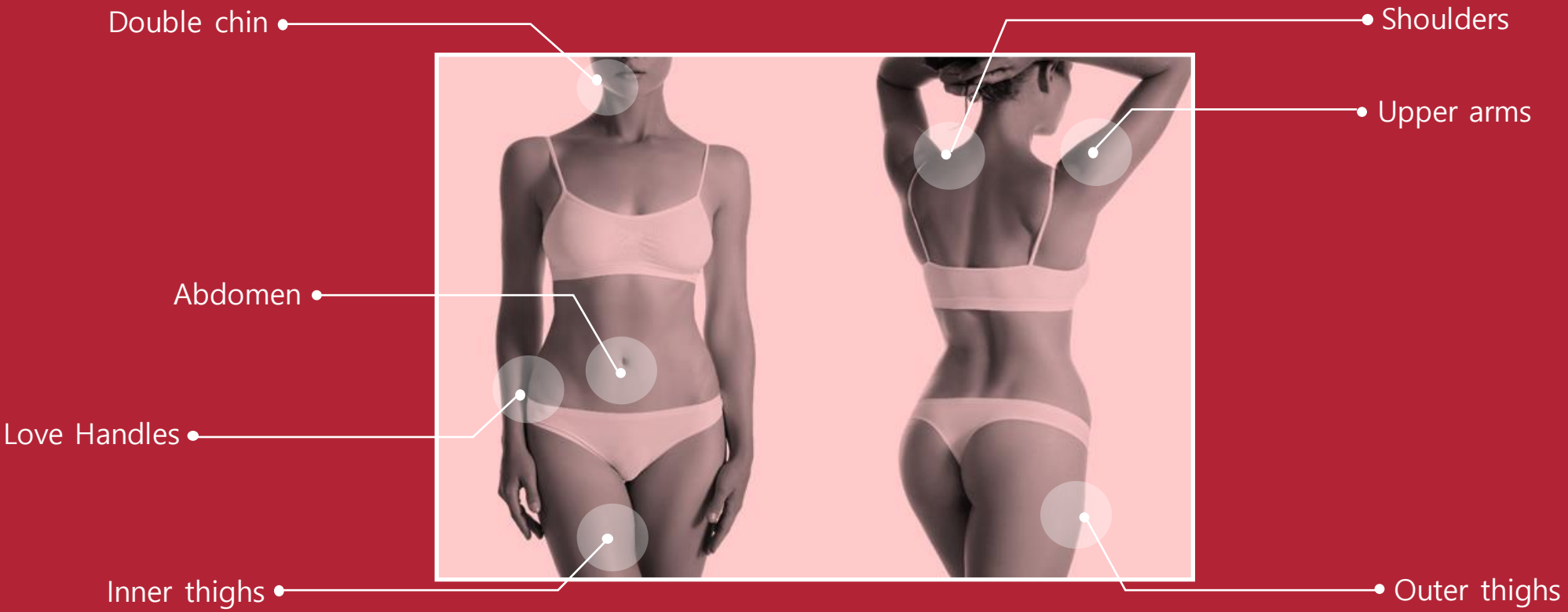
<Point Injection>

Apply 0.2~0.3ml at each point





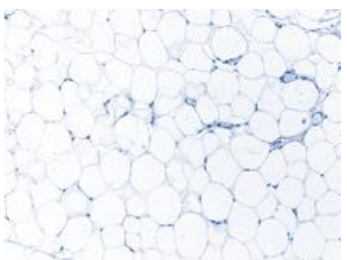
APPLICATION SITES



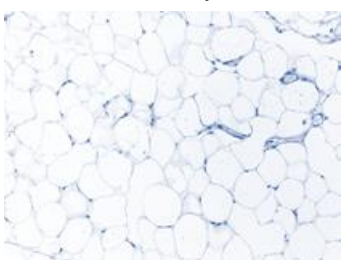


EX-VIVO TEST

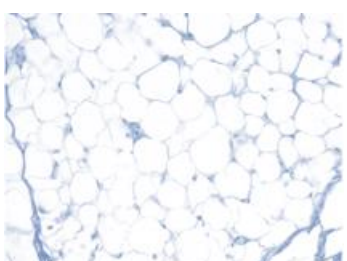
Control



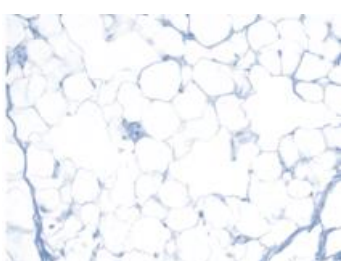
TNF-α 50μM



Control



Kabelline 10μM



Kabelline effectively breaks down fat cells and the number of cells reduces.

* TNF-α : positive control



BEFORE & AFTER

BEFORE



AFTER



After 6 sessions at 1week interval

BEFORE



AFTER



After 3 sessions at 1week interval



KABELLINE

THANK YOU†

