



VS POLYNAD

VS POLYNAD

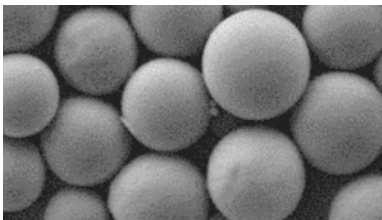
Volume improvement through PLLA-driven collagen stimulation

This PLLA-based solution focuses on activating the skin's collagen regeneration mechanism rather than simple filling, helping restore sunken areas while gradually enhancing skin elasticity and density.

How PLLA Restores Skin Volume and Stimulates Collagen Formation

PLLA (Poly-L-Lactic Acid) is a biodegradable polymer derived from natural sources such as corn. As an eco-friendly material, it is widely recognized and favored as a key ingredient in various collagen fillers. Beyond simply filling volume it promotes the body's own cellular regeneration, helping to enhance the skin's natural collagen synthesis process.

PLLA



- Stimulates collagen production to restore skin volume
- Made from biodegradable ingredients for safe use
- Improves hollow areas and enhances skin elasticity
- Currently used in popular products such as Sculptra and Juvelook

